

## TOOLS REQUIRED

- Set of metric wrenches and/or sockets
- Adjustable wrench
- Locking pliers
- 25' Tape measure
- Step Ladder
- \*3 Gallons of Hydraulic Oil

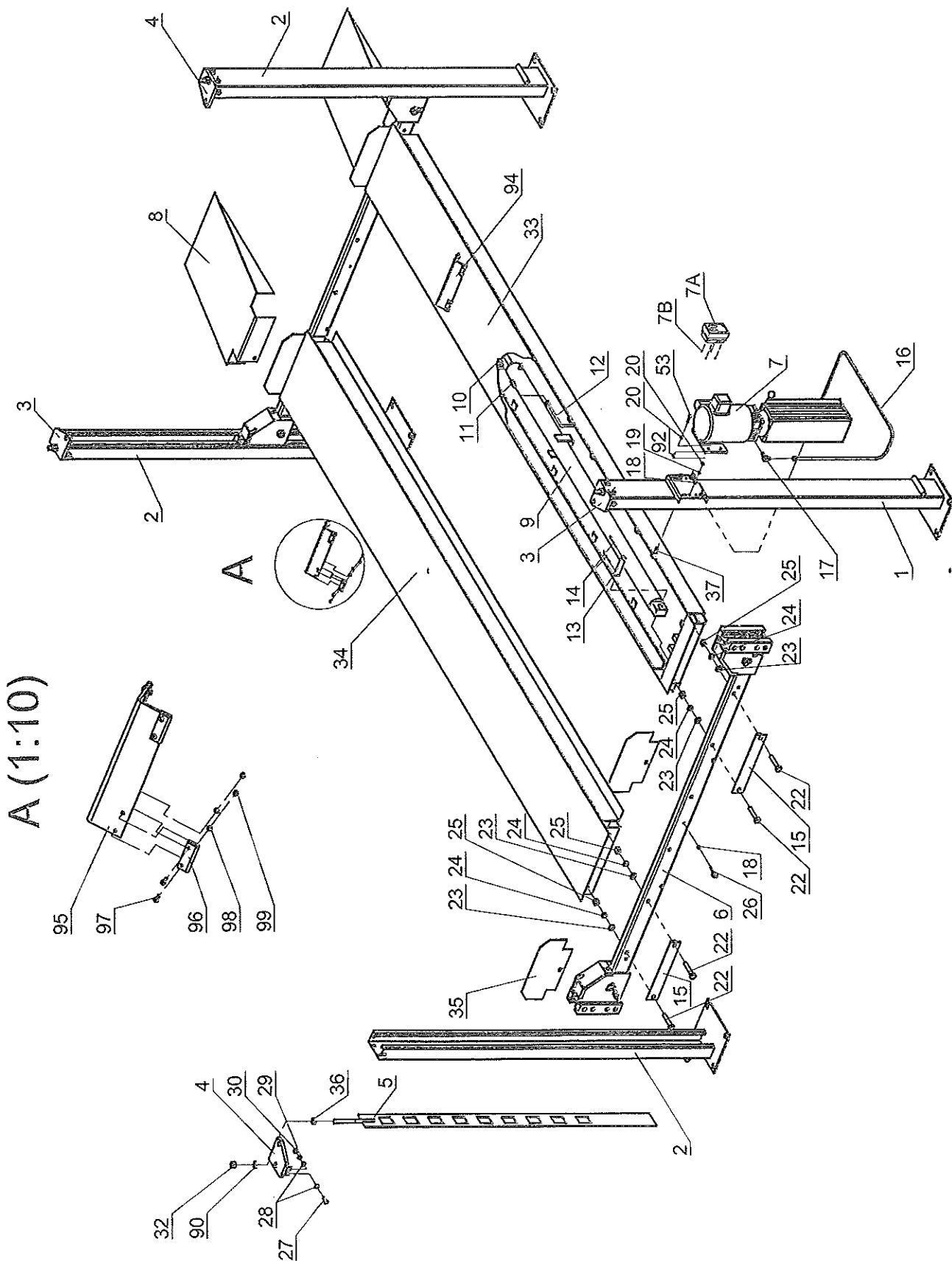
\*Recommended Oil: ISO 32 Light Hydraulic Oil

## **PRO PARK 8S INSTALLATION INSTRUCTIONS**

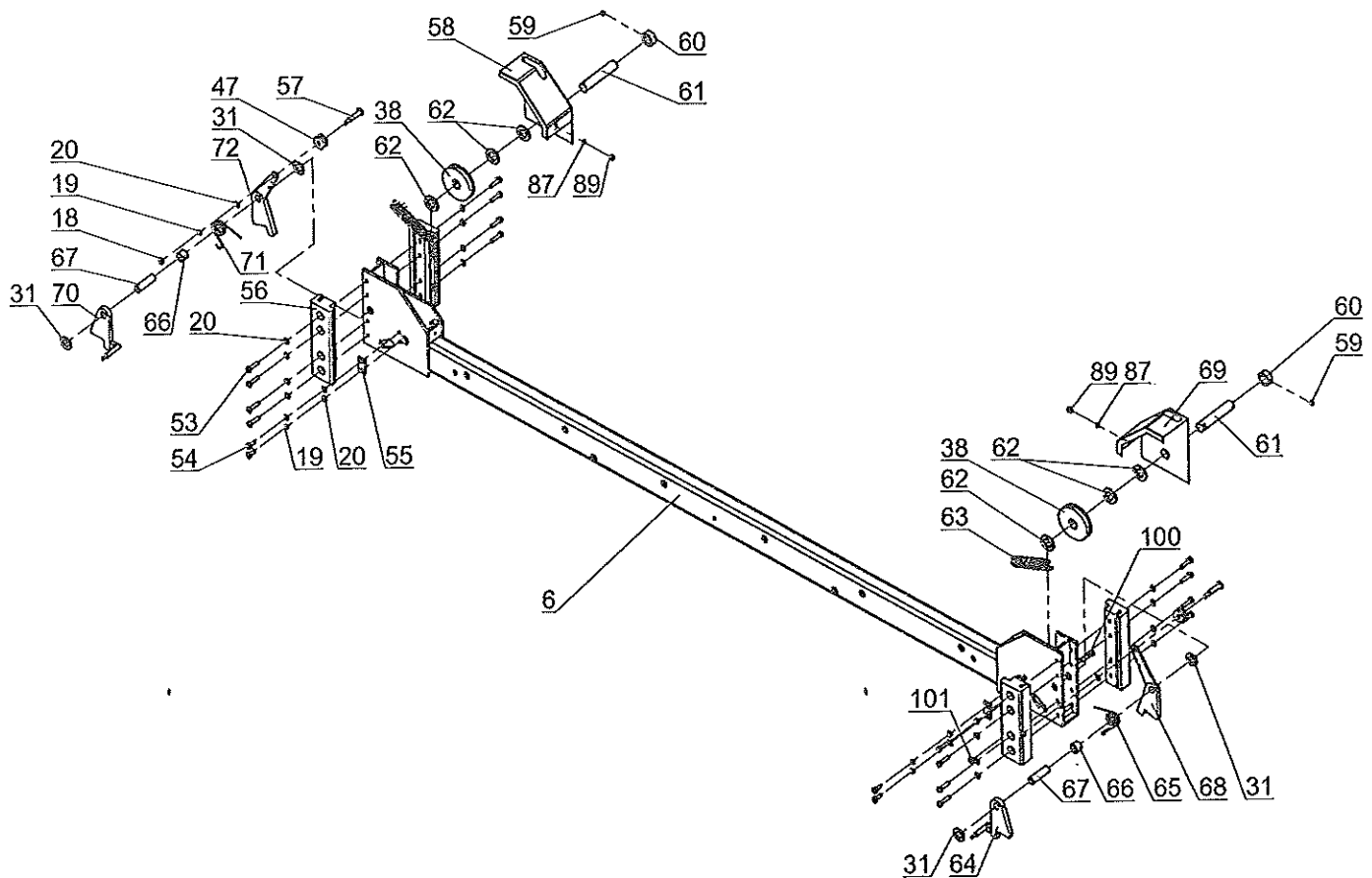
1. Remove plastic and cardboard packaging and loose items packaged inside of runways.
2. Prior to turning master runway (runway w/cylinder) over, make sure hose that is connected to cylinder is tight, remove protective cover over breather on cylinder, and remove jam nut off of opposite end of hose and run elbow through runway and tighten jam nut.
3. Extend cylinder rod completely, either by pulling on cables while pushing cable mounting bracket or use of a winch. Make sure cables are not crossed and are on all pulleys. Pull cables out of end of runway to remove all slack. Pulleys may need to be removed to route cables out of each end of runway. Check tightness of nut on cylinder rod end.
4. Carefully remove master runway from packaging framework, making sure to prevent runway or other parts from falling. Place runway in bay with top side up and hydraulic fitting on the side of the runway to the outside and in the corner that you want to install the power unit. Use of 4 wheeled dollies is recommended to allow for easier movement of runways to complete installation.
5. Prior to placing lift in the desired bay location, you will need to allow 6' clearance to the front and 9' clearance to the rear of the lift to install the lock bars shown in figure #5 and explained in step 17.
6. Remove columns from packaging and place at each corner of the lift installation area, making sure to place the column with the power unit bracket at the end of the runway with the hydraulic fitting.
7. Remove crossbeams and any remaining parts from packaging and set aside. Set one crossbeam at each end of runway with pulley on crossbeam ends facing inside of lift and threaded rod for latches facing outward.
8. Remove slave side runway from packaging and place on opposite side of master side runway with lip of runway facing inside of lift and top side up.
9. Set crossbeams on top of runways at each end with sheave to the inside of the lift, slide columns onto crossbeams at each end of runways making sure pulleys on crossbeams are pointing towards the inside of lift.
10. Lay out all bolts and hardware needed for each corner of lift at each corner of lift using the parts diagrams at the end of this manual.
11. Stand crossbeam and assemblies up and set runway lip over top of beams so that the bolt holes line up and attach runways and ramp brackets to crossbeams using 18mm bolts and hardware shown in Figure #1, do not tighten. Repeat procedure on opposite end; tighten all runway to crossbeam connecting bolts.
12. Remove latch covers on each end of crossbeams and set aside. Loosen set screw on sheave pin and remove pulley and spacer to route cable up column. Then reinstall pulley, spacer and set screw.
13. Slide lock ladders into top of columns and through polyurethane slider blocks on each end of crossbeams, remove top nut on lock ladder, and install column top caps as shown in figure #1. Tighten nut on ladder so that 3-4 threads are showing at top. Bolt top caps to posts using supplied hardware. Tighten bottom nut on lock ladder to secure locking ladder to top cap. Repeat for each post.

14. Route cables to each column and thru the latch covers as shown in figure #3. Cable is routed around white pulley on secondary lock so that the white pulley is between the column and cable. The cable tension keeps this secondary lock pulled back. Tighten nut so that 3-4 threads are showing at end of cable. Loosen cable retaining bolt under each pulley, making sure that cable or pulley is not rubbing the bolt head. Reinstall latch covers on each crossbeam.
15. Mount power unit to power unit column, remove dust cover on pump body, and install elbow and hose as shown in figure #1. Connect hose to fitting on runway. Do not over tighten or use Teflon tape.
16. Fill power unit reservoir with approximately 3 gallons of AW32 hydraulic fluid or automatic transmission fluid. Do not over fill; fill to line on reservoir, approximately 2" below fill cap.
17. Plug power unit into 110 volt outlet and press raise button to raise lift to a working height that allows room to get under runways and also allows for installation of lock linkage assembly to crossbeams as shown in figure #5. For 3Ø power unit, also see additional instructions, page 6. Relieve hydraulic pressure by depressing the lowering valve handle and lower lift to locks.
18. Install lock rods under runway as shown in figure #5. Make sure to install spacer between lock release handle and crossbeam and T-bar on opposite end. Bars run through guides welded under runway, if not completed prior to positioning lift in bay. Tighten coupling for rods so there is no play, but rods are allowed to turn freely.
19. Remove thread protectors from each threaded rod on each lock at ends of crossbeams.
20. Install Eye bolt in center of crossbeam, thread in to beam half way and tighten jam nut to secure. Remove one swivel from each end of long linkage rods and install through eye bolt, replace swivel end.
21. Check all cables to confirm they are on the correct pulley and are not crossed.
22. Set lift on first lock. With a 4' level check to make sure both left and right runway is level. If not adjust appropriate locking ladder to level runways.
23. Raise lift to next lock and listen for the first lock to engage. Determine which latch/latches have engaged. Proceed to each corner and adjust cable until latch engages. All four latches should engage at approximately the same time.
24. Connect linkage to T-bar and locks at each end to crossbeam as shown in figure #5. Short rod attaches to bottom of T-bar and long attaches to the top. Adjust coupling under runway to take slack out of the two rods. Adjust linkage to take slack out of rods and tighten connector of rods under runway so that locks on each corner fully disengage when lock release lever is pulled. Lift must be raised off of locks to check for proper adjustment.
25. Cycle lift to full rise and lower making sure lift is rising properly and all locks are disengaging when release lever is activated.
26. There will be some initial stretching of the cables after a week of use readjust cables to make sure all latches are engaging at the same time. Re-adjust as needed every six months.
27. Install ramps and wheel stops at runway ends.

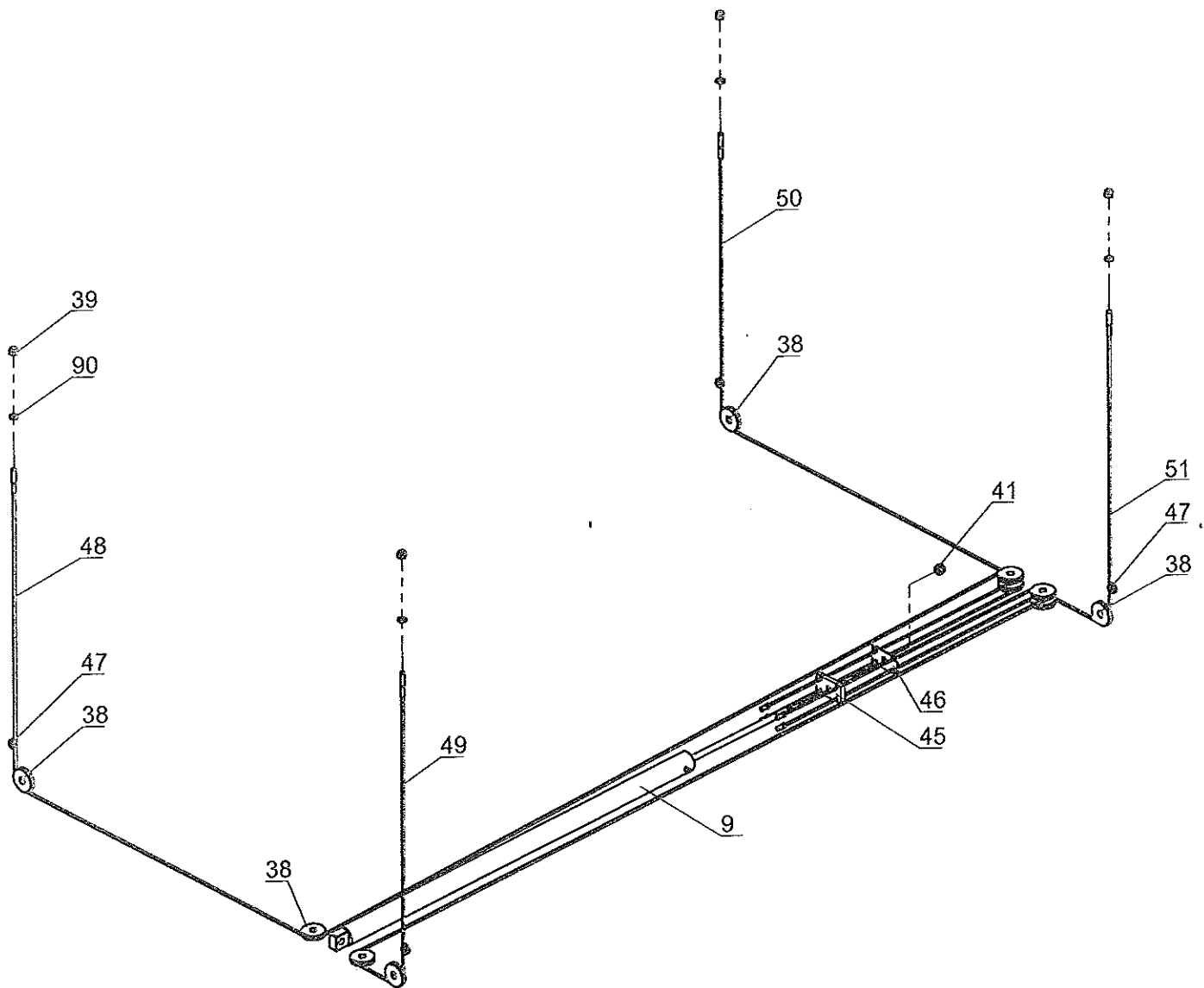
FOUR POST 8K ILLUSTRATED PARTS LIST



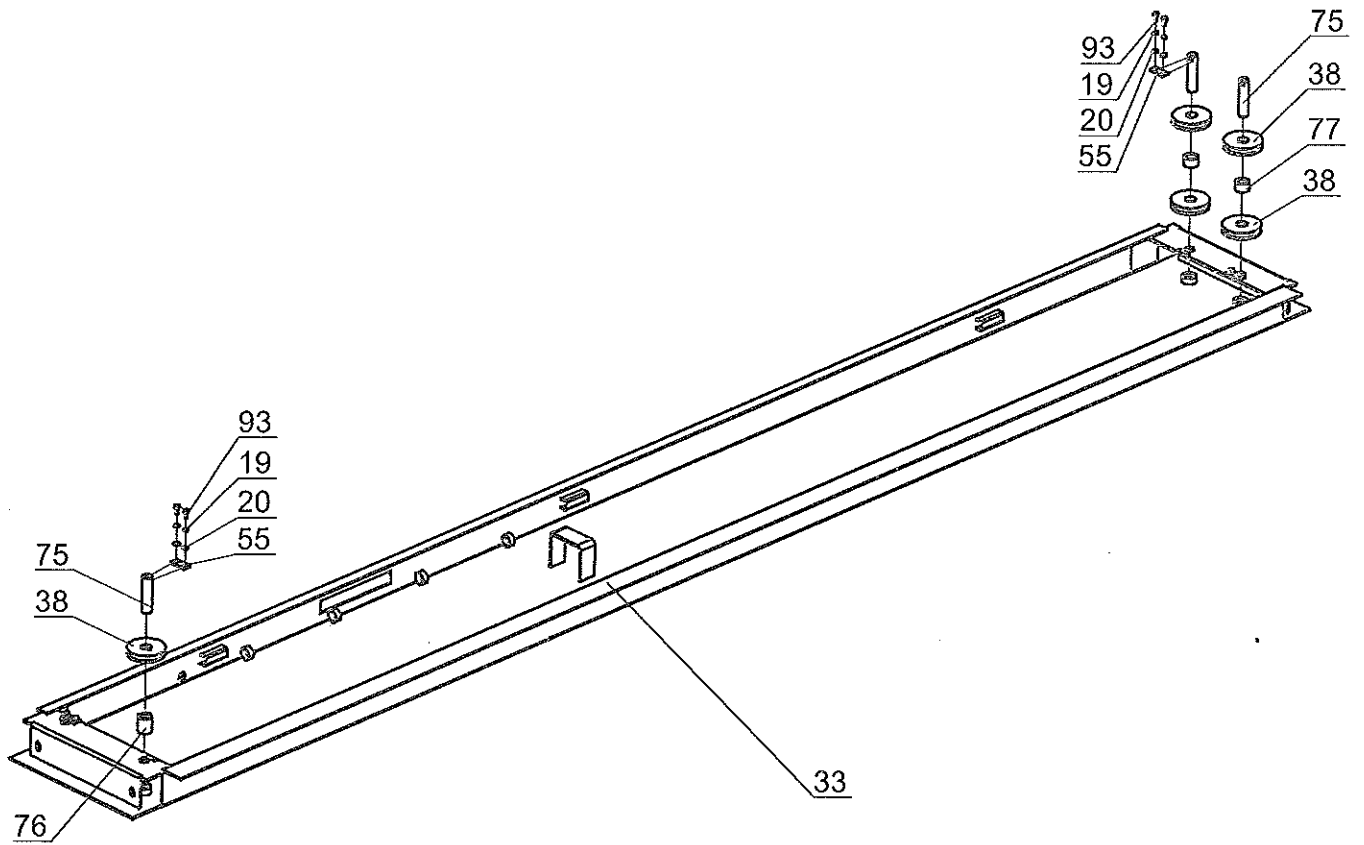
GENERAL ILLUSTRATED PARTS LIST - FIGURE #1



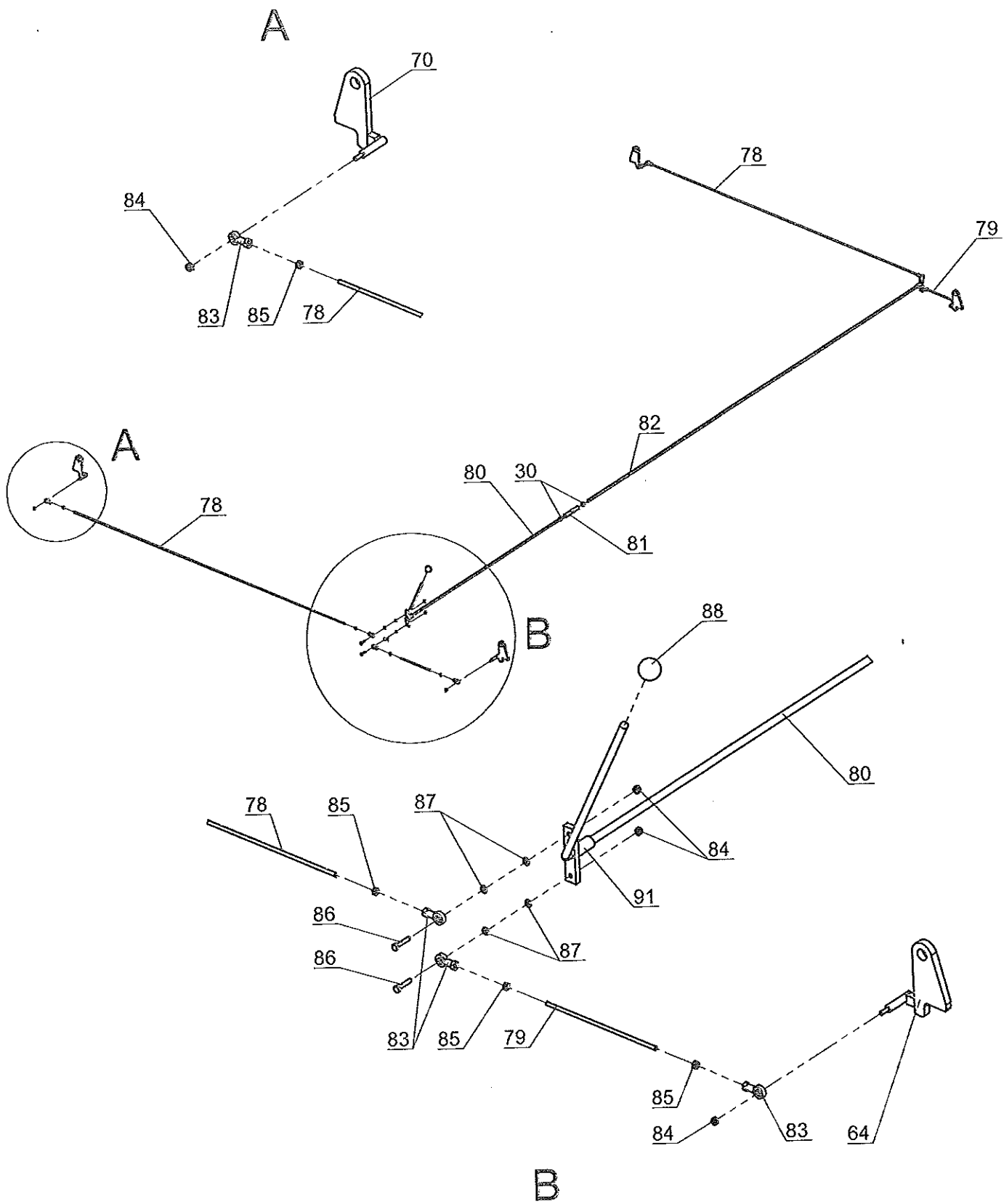
**CROSSBEAM ASSEMBLY - FIGURE # 2**



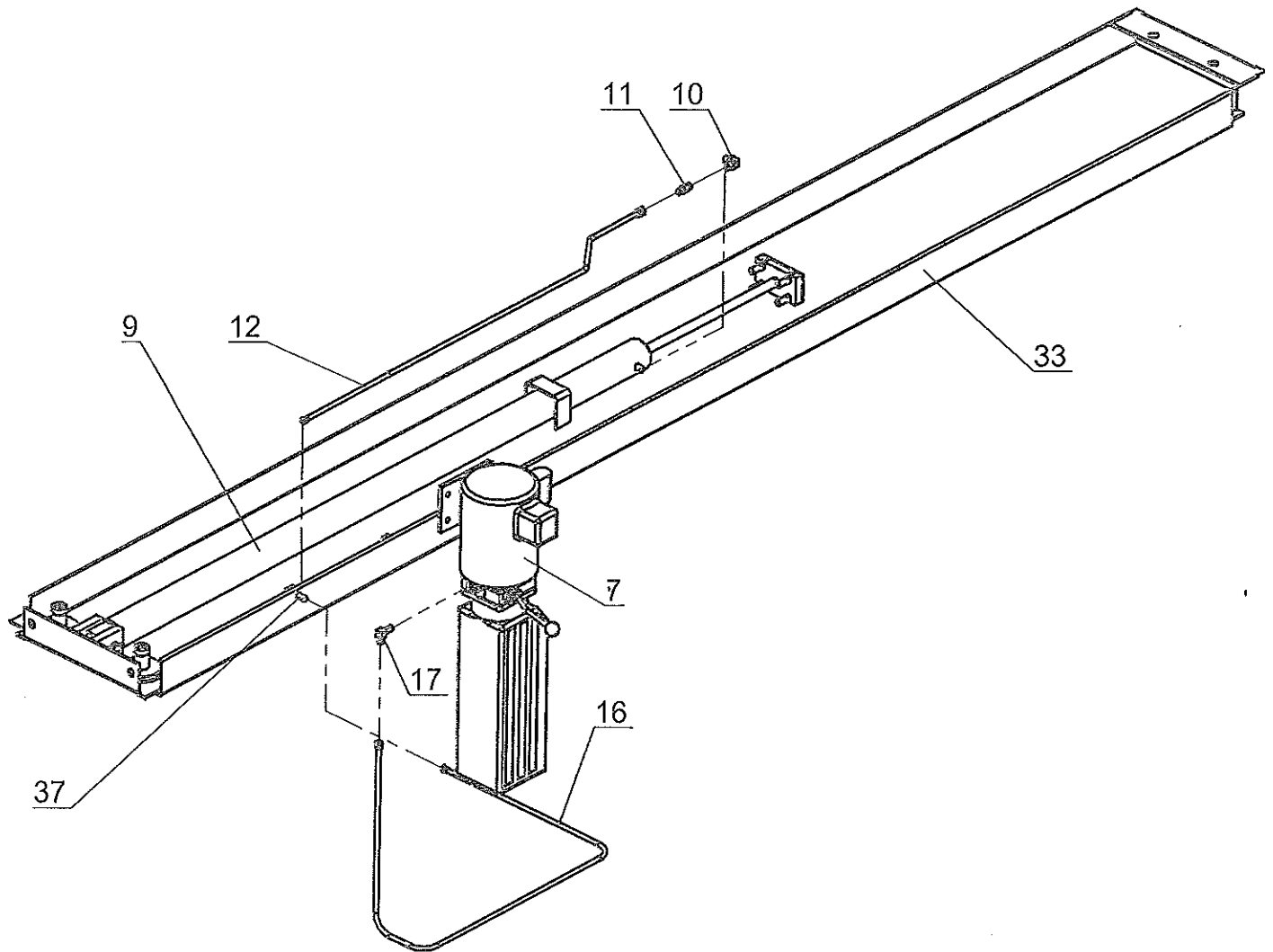
**CABLE COMPONENTS & ROUTING - FIGURE # 3**



**RUNWAY AND SHEAVE COMPONENTS - FIGURE # 4**



SAFETY LATCH & LINKAGE COMPONENTS - FIGURE # 5



HYDRAULIC & CYLINDER COMPONENTS - FIGURE # 6